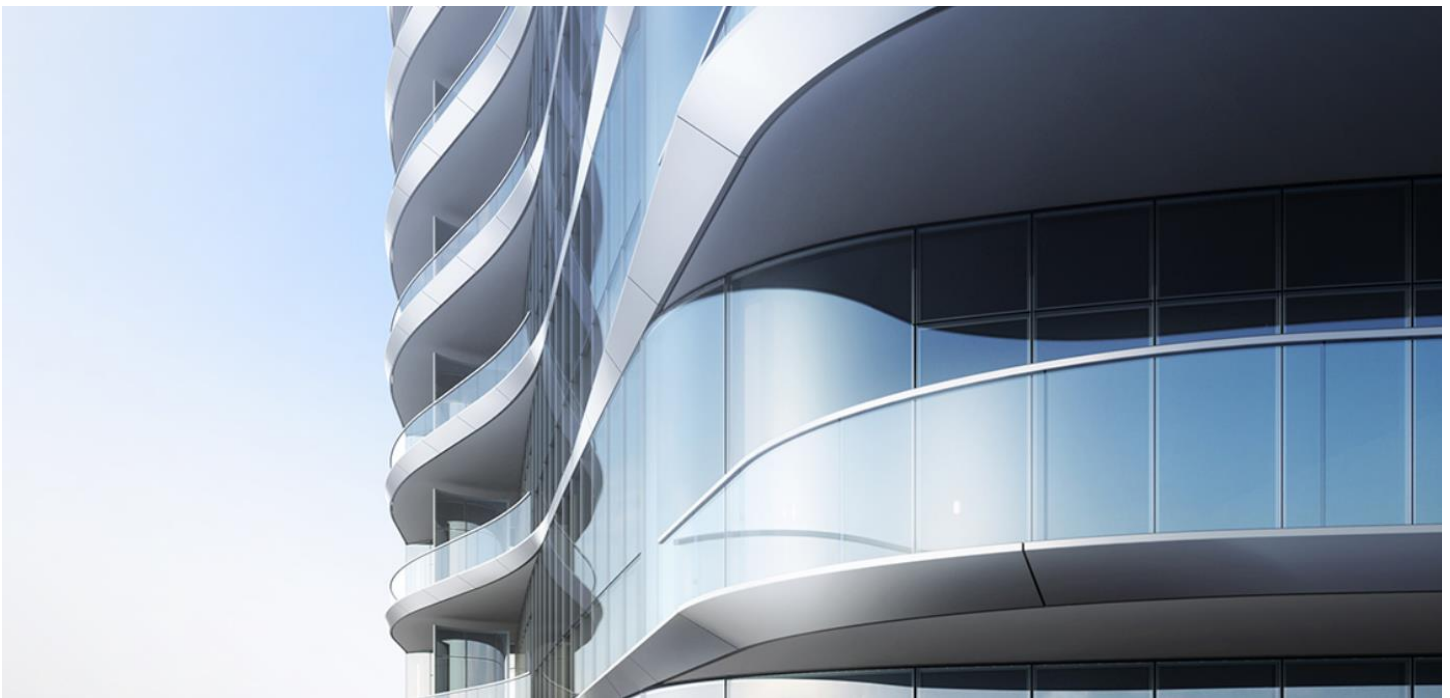


## Adrian Smith + Gordon Gill Architecture's yacht inspired tower rises in Miami

By Georgina Johnston



Inspired by the iconic Riva yacht, Una Residence is a 47 storey tower defined by a sculptured façade of clear modern lines and ribbon-like curves

The tower will be the Brickell neighbourhood's first waterfront residential tower in over a decade. Developers OKO Group and Cain International have enlisted architects Adrian Smith + Gordon Gill (AS+GG) to design the project.

Slated for completion in early 2023, Una Residences will consist of 135 spacious condominiums spanning 47 floors boasting unobstructed views of the Atlantic Ocean, Biscayne Bay, and the Miami city skyline. Residences range from two-to-five bedrooms, measuring between 1,100 to 4,786 sq ft in size, with two ultra-exclusive penthouses available.

OKO Group and Cain International enlisted AS+GG to design both the building's architecture as well as its interior. The team's holistic perspective to design has allowed the architects to establish an aesthetic relationship between the tower's materials, textures, and design elements to create continuity and

maintain the philosophy of the building inside and out. The designers were tasked with using the language of architecture to embody the spirit of the city and evoke the natural beauty of Brickell's urban, waterfront environment.

*“Una’s subtly undulating surface and strong silhouette stands proud at the water’s edge. We drew inspiration from the elegant shape and opulent materials used in classic yacht design, particularly the beautifully lacquered wood, exposed materials, and stainless-steel connections found on the Italian-made yacht, the Riva.” – A. Smith, FAIA, Design Partner, AS+GG*

Residents at Una will approach the building’s driveway and immediately notice the sweeping canopy arc and the smooth lines of the porte cochère, before continuing inside into the grand double-height lobby. Una’s modern curves are complemented by lush, colourful gardens, designed by prominent Swiss landscape firm, Enea Landscape Architecture, that further connect the building to the rich tapestry of Florida’s foliage.

Floor-to-ceiling windows welcome daylight into each open-plan space, while extra-wide terraces are carefully integrated into the great rooms and bedrooms. Sliding doors create an open connection to the main living spaces and a flow between inside and outside, while drawing attention to the water.

Amenities at the boutique tower will include three swimming pools, a children’s splash-pad area and playroom, a movie theater, an Aman Resort-inspired spa and steam room, a fitness centre featuring yoga and personal training facilities and onsite dining.

