

Herzog & de Meuron-designed Jade Signature Unveils Penthouse



Developed by Fortune International Group, Jade Signature's brand new, turnkey \$29.5 million penthouse directly fronts the Atlantic Ocean offering spectacular 360-degree ocean, city and Intracoastal Waterway views on a private stretch of pristine, sugary-sand beachfront. Created by Pritzker prize-winning Swiss architects Herzog & de Meuron, and interior designer and French 'master of grande luxe' Pierre-Yves Rochon, the building's attention to detail and meticulous craftsmanship have earned Jade Signature a bevy of global accolades and top honors, including being named one of Dezeen Magazine's "Top 10 Skyscrapers of 2018."

The prestigious penthouse, designed by Fortune International Group's interior design team led by Lacy Berroa, reflects the ingenuity and artistry that the renowned design team expertly employed in the tower's stunningly appointed flow-through spaces and artful interiors.

"This \$29.5 million penthouse represents the true pinnacle of luxury in South Florida," said Edgardo Defortuna, President and CEO of Fortune International Group. "Buyers here have consistently lauded the building's incomparable innovation and craftsmanship. From its prizewinning architecture to its artfully designed interiors, the attention to detail and use of luxury materials within Jade Signature are unmatched. The penthouse undoubtedly takes the tower's high-style and sophisticated design to new heights."

A work of art in and of itself, the upper penthouse features six bedrooms and nine and a half baths that are spread throughout 11,661 square feet of open, airy space, meticulously crafted to bring the outdoors in. Natural light pours into the living areas through floor-to-ceiling windows, while an additional 7,571 square feet of expansive terraces frame 360-degree views of the ocean, surrounding city and Intracoastal Waterway. In producing and hand-picking furnishings and fixtures for this particular residence, Berroa was chiefly inspired by the building's panoramic ocean views and striking architectural details.

“The movement and the crystalline color of the ocean inspired the overall design scheme of the penthouse,” said Berroa. “Design details such as reflective mirrors were used to amplify the ocean views and materials such as soft linen and suede textures in neutral tones highlight the residence’s proximity to the sand. The panoramic ocean views are the star of the penthouse – each of the furnishings and fixtures were carefully selected to complement the views and not distract.”

Rich textures and vibrant polished metals – as well as mixed media artwork by Peter Studl featuring Indonesian quartz crystal details – were incorporated into the interiors to bring a metropolitan edge to the unit’s neutral palette. Natural wallcoverings, in addition to exquisite walnut millwork by Italian Luxury Living, were used in nearly every living area, not only to provide a sense of warmth within the space, but to create a distinctive textural quality. Timeless, contemporary furnishings were hand-picked to pay homage to the architectural details of the penthouse from a selection of high-end designers that included Minotti, Rugiano, Poliform, Holly Hunt and Fendi, and complemented by custom-made lighting fixtures by Patrizia Garganti, Cielo, and Roll & Hill, among others.

Designed for entertaining, the home has a double-sized living room, a family room, breakfast room, bar and wine cellar, library, study, in-unit gym and spa with full steam and sauna, a playroom, and private elevator. There is additionally a private pool on the Atlantic Ocean-facing terrace, an indoor and outdoor kitchen with European designer cabinetry by Snaidero and appliances by Gaggenau and Sub-Zero, and custom-designed baths by PYR, including cabinetry with marble countertops and marble flooring. The master suite is an additional showpiece, marked by a double-sized sitting room, an office, and separate his and her baths and walk-in closets and dressing areas.

As a whole, Jade Signature’s amenities and services rival those of a five-star resort, including its private beachside restaurant, full-service, full-floor spa by Tata Harper, fitness center, library and reading lounge, wine bar, entertainment and game lounge, playroom and tech lounge for children and teens, full-service concierge, private elevator entrances, and smart technology throughout.

Currently, a limited number of residences remain for sale within The Jade Signature Collection, which include the tower’s luxurious two-story Sky Villas, priced from \$11.9 million. The Sky Villas offer stunning features, such as flow-through views, expansive terraces, private elevators, smart technology, service quarters and PYR-designed bathroom cabinetry. For additional information, call 786.565.3991 or visit www.jadesignaturecollection.com.

*Laura Acker uploaded Herzog & de Meuron-designed Jade Signature Unveils Penthouse through Add A Home.
Add your own project for the chance to be featured in Editor’s Picks.*



Photo: Neuelane
Photo Categories: living room
Bar and entertainment area



Photo: Neuelane
Photo Categories: living room
Bar in Background



Photo: Neuelane
Photo Categories: living room
Entertainment Bar Area



Photo: Neuelane
Photo Categories: living room
Entertainment Room



Photo: Neuelane
Photo Categories: dining room
Formal Dining Room

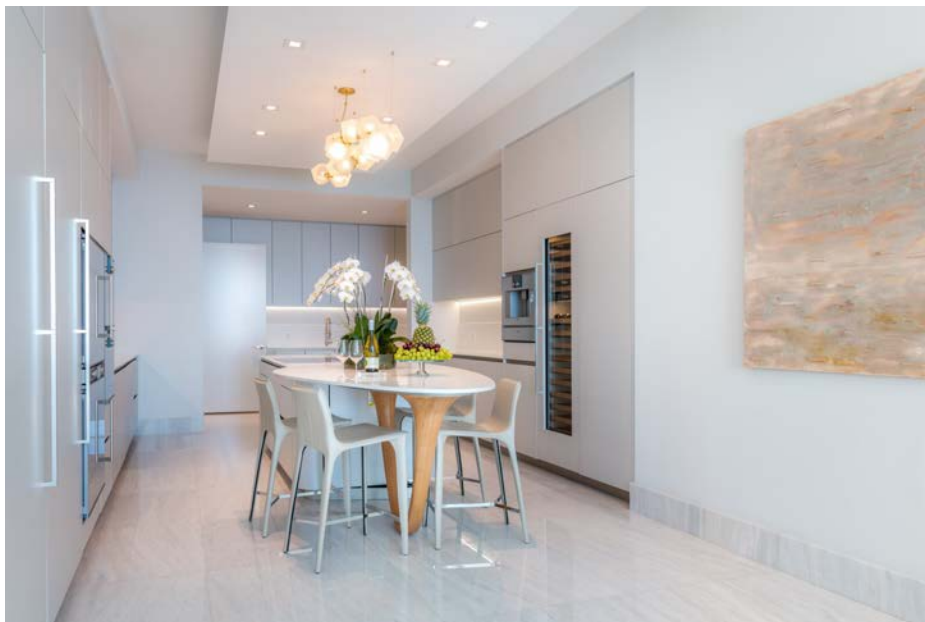


Photo: Neuelane
Photo Categories: kitchen
Kitchen



Photo: Neuelane
Living Room Entrance



Photo: Neuelane
Master Bedroom



Photo: Neuelane
Terrace Dining Area